



bernd rohrmann
mini-mini-memo about his horsham trip
august 2024

>>> the location of horsham

the city "horsham" is located in australia's state victoria, see the map below, marked there.



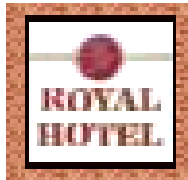
it's around 300 kilometres north-west of the capital melbourne, and it has now 21000 residents.

>>> what to see in horsham

quite a few things – both architecture and nature, like this – a very old historic river bridge.



>>> *and and and - - of course pubs!*



there are about 15 in horsham, usually called “hotels” (that’s a victorian tradition). only one will be shown here, the oldest and the most impressive one - -

and: the one where bernd spent a troolee special personal day in august - - the “royal hotel”.



founded in 1881(!). so it looked about 100 years ago – with a large terrace in the upper section.



the “royal hotel” has about everything: meeting rooms, dining rooms, bars, even pool tables.



and a very rich menu for dining in its restaurant – “local” or “australian” or “international” style.



the “royal hotel” it has accommodation as well, which bernd needed on that day in august, both simple yet functional and low-priced.



and here he is, the manager and the “master” of the whole place – a both competent and friendly guy! perhaps a bit surprised when bernd turned up with a very red tie and a very large tophat – yet he just smiled, and then shouted him a drink!



>>> *finally - how to get to horsham?*

for bernd: of course by trains. as visible here, horsham’s railway station is very little and very plain though!



but there are several direct trains from and to melbourne, which need about 4.5 hours. plus, the special “overland” train, connecting aidelaide and melbourne, stops in horsham twice a week.

bye for now to horsham – where to be on that special day was a pleasure for bernd.

